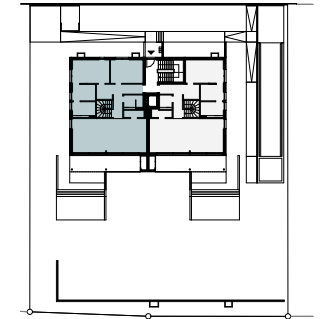
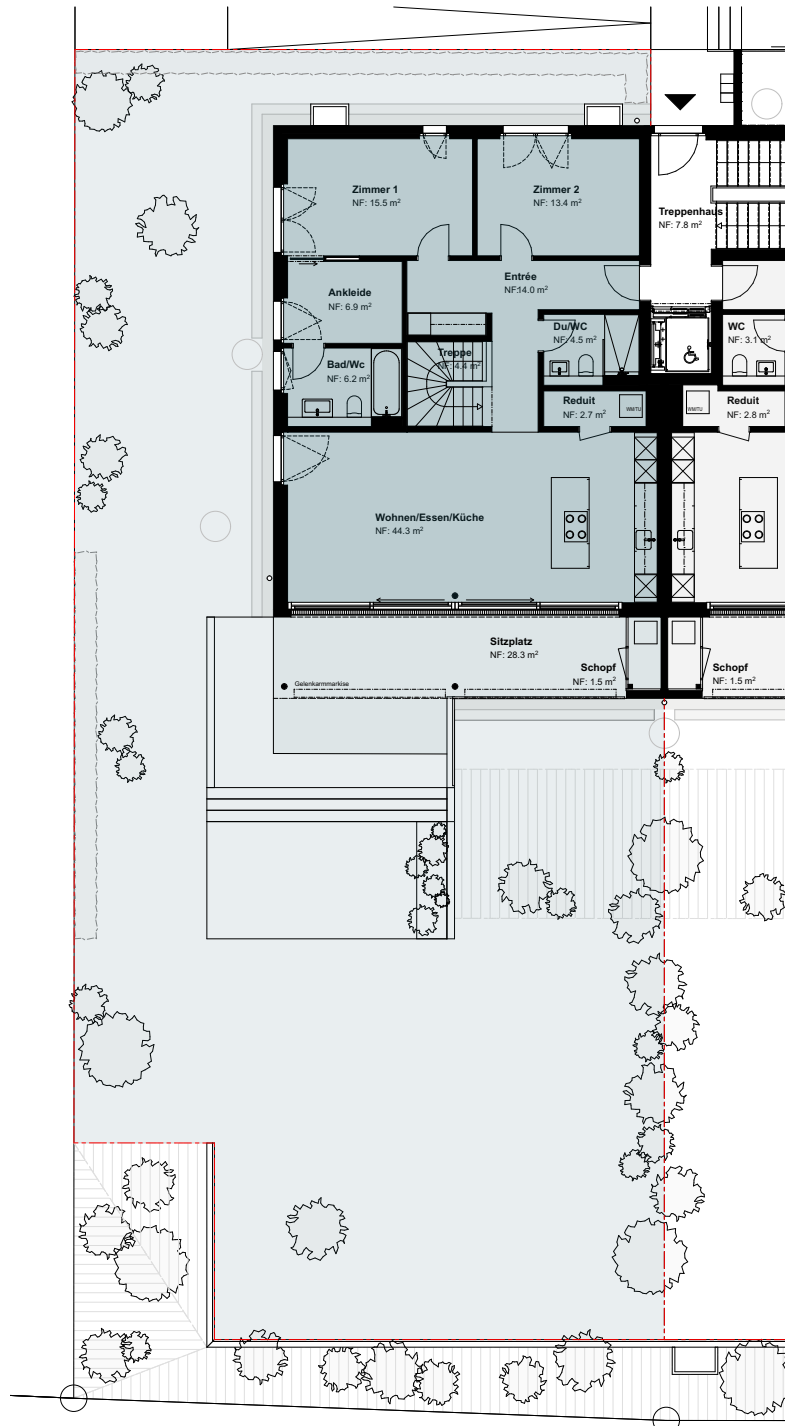
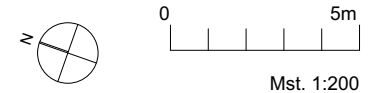
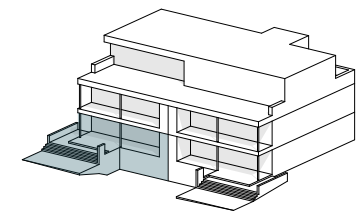


Wohnung 2 - Übersicht Erdgeschoss



5 1/2 Zimmer-Gartenwohnung

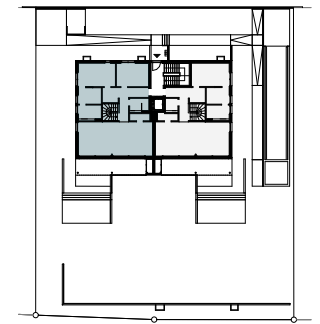
Nettonutzfläche	166.4 m ²
Sitzplatz inkl. Schopf	29.3 m ²
Keller	9.8 m ²
Aussenfläche inkl. Sitzplatz	378.9 m ²



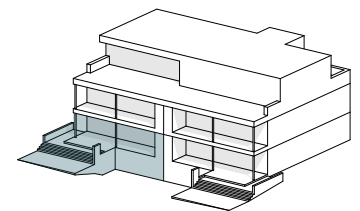


Erdgeschoss

Wohnung 2
Erdgeschoss

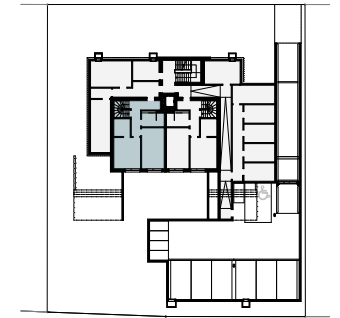
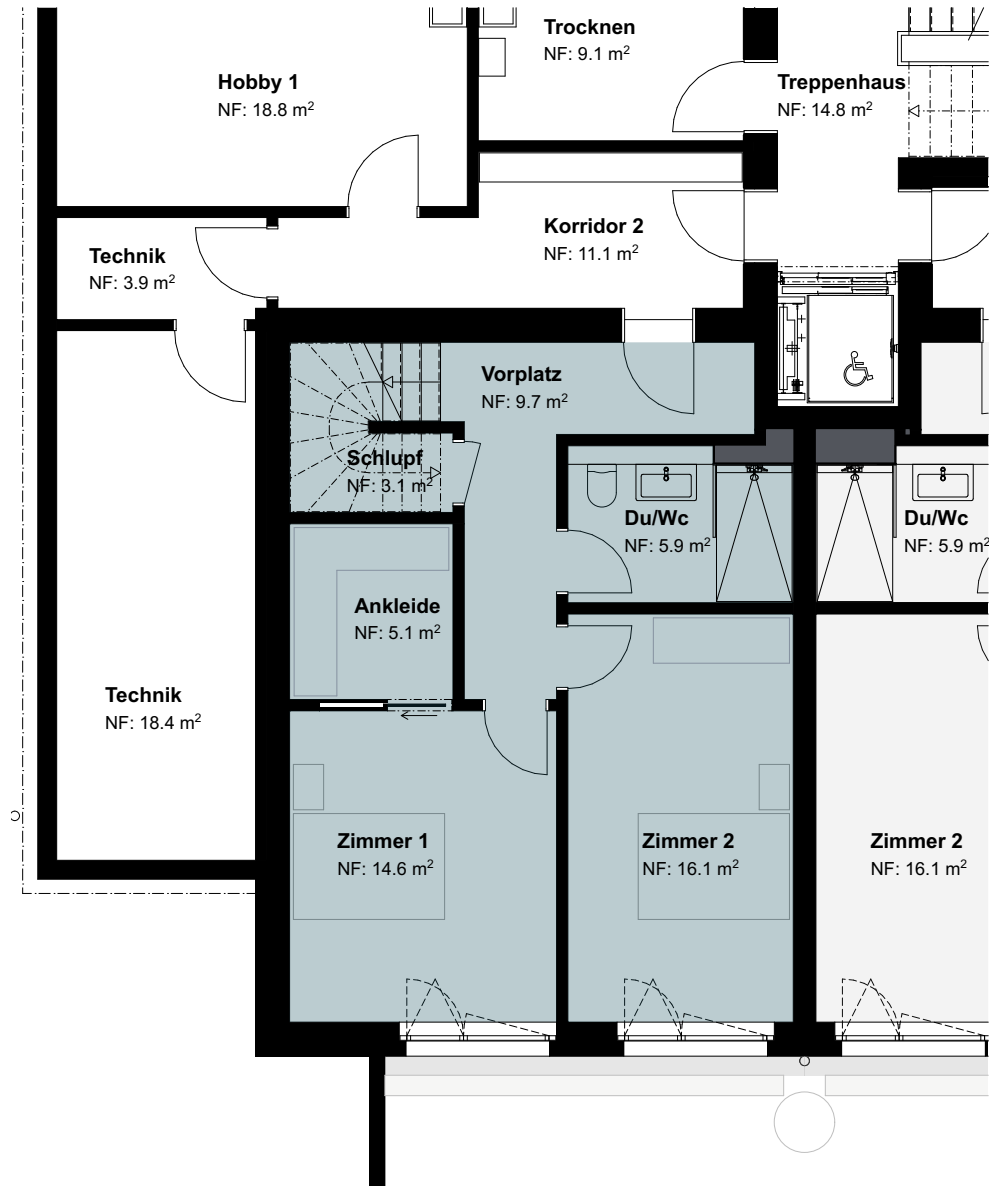


5 1/2 Zimmer Gartenwohnung
Nettonutzfläche EG 111.9 m²



Wohnung 2

Untergeschoss



5 1/2 Zimmer Gartenwohnung
Nettonutzfläche UG 54.5 m²

